



— MODEL — **MEPT12**

# Valve Position Transmitter



- Accurately Monitors Valve Position
- Environmentally Sealed to IP-68
- Featured on Electronic Control Valves
- Easy Field Adjustments
- Compact and Rugged Construction

The Cla-Val Model MEPT12 Valve Position Transmitter is an accurate monitor of valve position. Through an industry standard 4-20 mA output, the MEPT12 delivers the accuracy required for computer-guided control valve systems (SCADA).

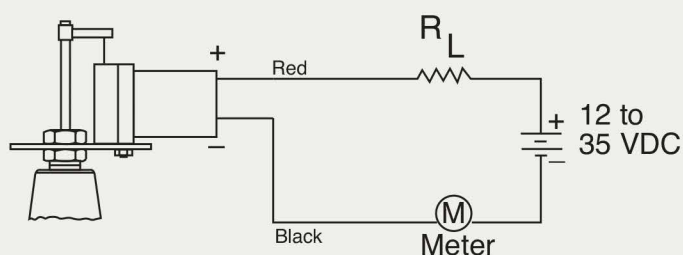
The electronic components are enclosed in a rugged, sealed aluminum and stainless steel housing. The assembly is mounted externally on the cover of a Mirab main valve. An extension of the valve stem projects outside of the cover at the center boss and is mechanically linked to the electronic components with an extensible wire rope.

As the valve stem rises and lowers, the MEPT12 provides an output signal in direct proportion to the valves position. An internal spring maintains constant tension on the wire rope for virtually no hysteresis error throughout valve stroke.

## Wiring Diagram

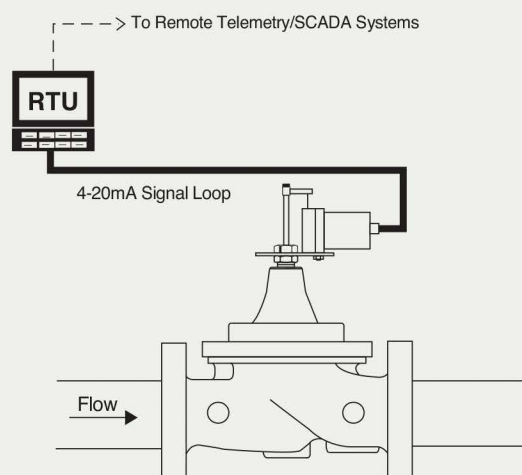
The signal from the position sensing mechanism wire rope is converted to a two-wire 4 to 20 mA current output. The voltage compliance range is 14 to 35 VDC. The required, but not supplied, maximum load resistance can be calculated using the following formula:

$$R_L \text{ Max.} = \frac{V_{\text{supply}} - 12.5}{.020}$$

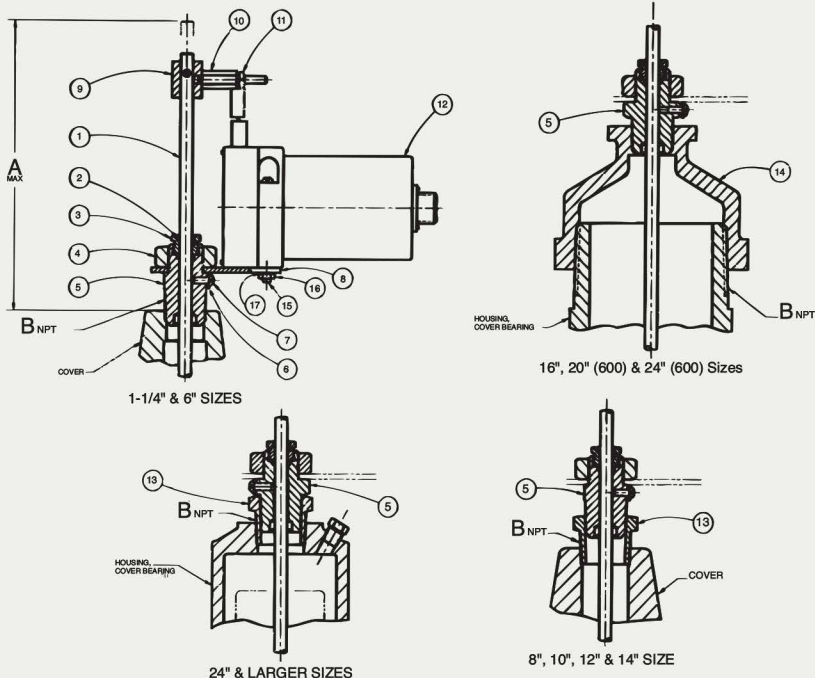


## Typical Installation

The MEPT12 Valve Position Transmitter can be used to transmit valve position to the optional MERTXX Electronic Valve Controller.



## Dimensions



No.	Description
1	Stem Assembly
2	O-Ring
3	Bushing, Gland
4	Nut, Hex
5	Adapter
6	Washer, Fiber
7	Screw
8	Plate, Mounting
9	Nut, Coupler
10	Hex, Coupler
11	Nut, Hex
12	Transducer Assembly, Position
13	Bushing, Hex Pipe
14	Reducer, Bell Pipe
15	Screw, Fillster Head
16	Nut, Hex
17	Lockwasher

## Dimensions (In Inches)

BasicValve 100-01	1 1/4	1 1/2	2	2 1/2	3	4	6	8	10	12	14	16	18	20	24	30	36*	42*	48*
Dimension "A"	10.19	10.19	7.16	7.16	7.34	9.87	9.56	10.66	10.76	11.47	12.79	12.66	12.66	CF*	16.55	CF*	CF*	CF*	CF*
Dimension "B"								1.69	2.44	2.94	2.94	2.94	2.94	CF*	5.19	CF*	CF*	CF*	CF*
C (NPT)	1/4	1/4	1/2	1/2	1/2	3/4	3/4	1	1	1 1/4	1 1/2	2	2	CF*	1	CF*	CF*	CF*	CF*
BasicValve 100-20					3	4	6	8	10	12	14	16	18	20	24	30	36*	42*	48*
Dimension "A"					7.16	7.34	9.87	9.56	10.66	10.76	11.47	11.47	12.66	12.66	12.66	16.55	CF*	CF*	CF*
Dimension "B"									1.69	2.44	2.94	2.94	2.94	2.94	2.94	5.19	CF*	CF*	CF*
C (NPT)					1/2	1/2	3/4	3/4	1	1	1 1/4	1 1/4	2	2	2	1	CF*	CF*	CF*

\*- Consult Factory

## Specifications

### Fits Valve Sizes

1-1/4" thru 48"

### Pressure Rating

400 psi Max.

### Temperature

-13° to 180° F

### Materials

Cast aluminum and stainless steel housing  
Steel bracket  
Brass adapter  
Stainless steel stem  
Buna-N® synthetic rubber seals  
Other materials available as additional cost option

### Electrical

Housing, weather sealed NEMA 6 (IP-68)

### Output Current: 4-20 mA

### Adjustment Range

At 4mA 0 to 30% of Range  
At 20mA 80% to 100% of Range

### Insulation

100 Meg Ohms min. at 100 VDC

### Repeatability ± 0.015% Full Scale

Protection for reversed polarity

### Wiring

Red wire for positive  
Black wire for negative

## When Ordering, Please Specify

- For New Valves – At time of order specify:  
"with MEPT12 Installed".
- For Retrofitting existing valves give all nameplate data of valve to which MEPT12 will be installed.



Central Office

NO 20, 14 M St, Keshavarz Blv , Kashan ,Esfahan, Iran

Tel:+983155534206

Fax:+983155571094

Workshop

Tel:+983155684440

Fax:+983155684441